

SUNSHINE HERITAGE TOUR



prepared by

the Sunshine & District Historical Society

INTRODUCTION

This heritage tour is based on a series of pictorial panels at particular points in the City of Sunshine. It has been planned to encourage people to explore the story of a city which extends from the Maribyrnong River to Deer Park.

Human life in the area now known as Sunshine stretches back into the mists of the past. We can signal only a fragment of what we know. What we do not know is infinitely greater. Even so, these panels carry the message that we, today, care about Sunshine, past, present and future.

ACKNOWLEDGEMENTS

Sunshine & District Historical Society thanks the following for permission to reproduce photographs used in the heritage panels :-

La Trobe Collection, State Library of Victoria: Panel 1, The Saltwater River, from above the Melbourne Meat Preserving Company's Works. (*Illustrated Australian News*, 5 October 1868).

Frank Endacott, Healesville: Panel 2, William Barak and Children at Coranderrk.

Braybrook Hotel Pty. Ltd: Panel 3, Braybrook Hotel in 1927.

Norm and Ray Carlton: Panel 4, Sunshine Station, 1924.

Mrs. Irene Jenkins: Panel 5, Thomas's Butcher Shop, c. 1927.

Bi-Lo Ltd. : Panel 7, Braybrook Shire Hall.

The Society's thanks also go to :-

Melissa Brickell, Koori Education Officer, Museum of Victoria, who was involved in the writing of the text for Panel 2 and assisted with research on photographs.

Mike Purves, of Barry Searle Photography, Sunshine, for his photographic work

Sandra Smith of the Aboriginal Heritage Unit, Museum of Victoria, for her assistance with photographs relating to Aboriginal heritage.

Staff of Photostory Pty. Ltd., who produced the heritage panels.

The Bicentennial Authority for substantial help in funding Panels 1, 3, 4, 5, and 6

Sunshine City Council for helping to fund Panels 2 and 7.

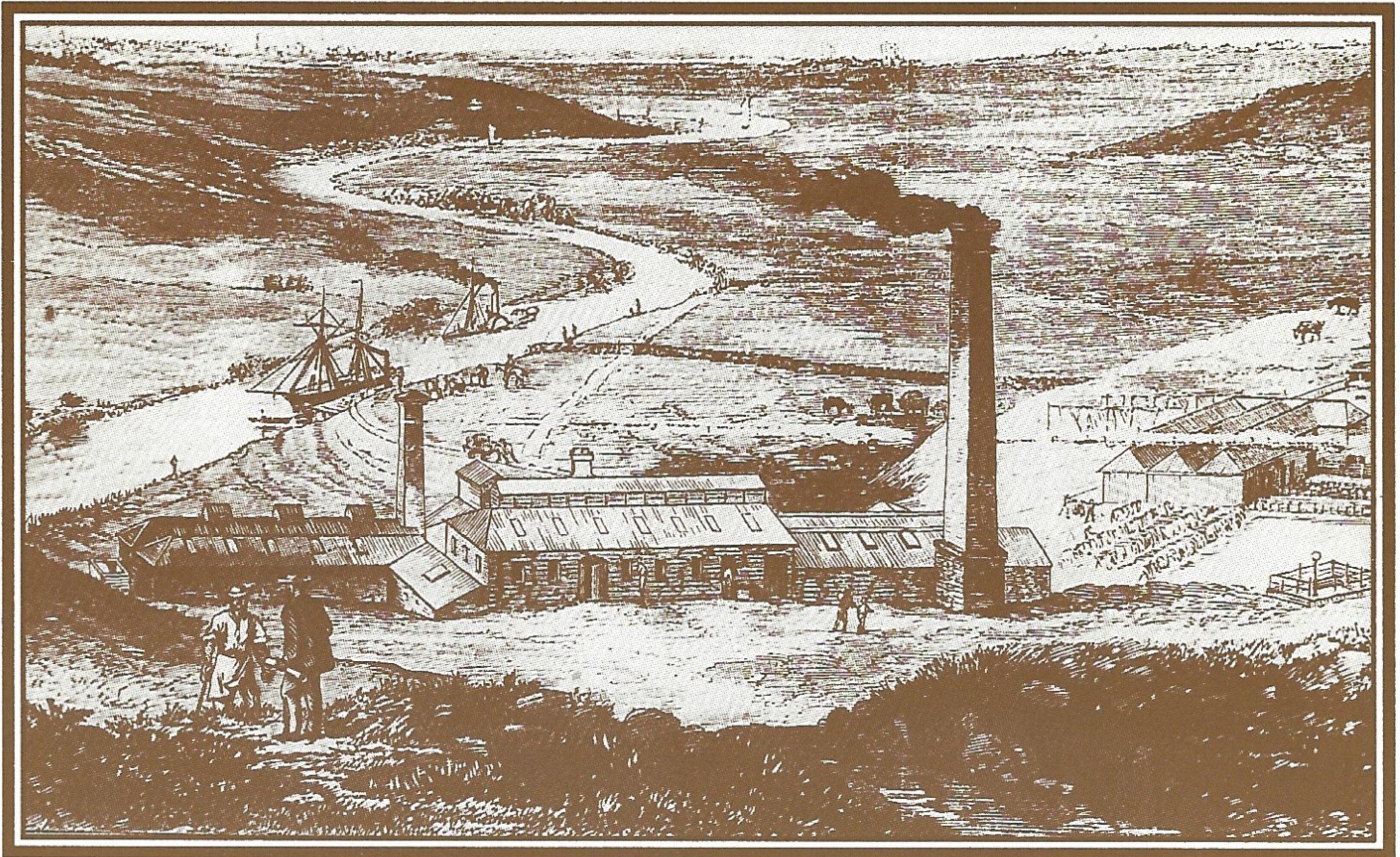
Staff of Melbourne's Living Museum of the West, who have helped in a number of ways, especially Gary Vines.

Past and present mayors of the City of Sunshine, Ian Mill and Don McKay for supporting the project.



MEAT WORKS

1868



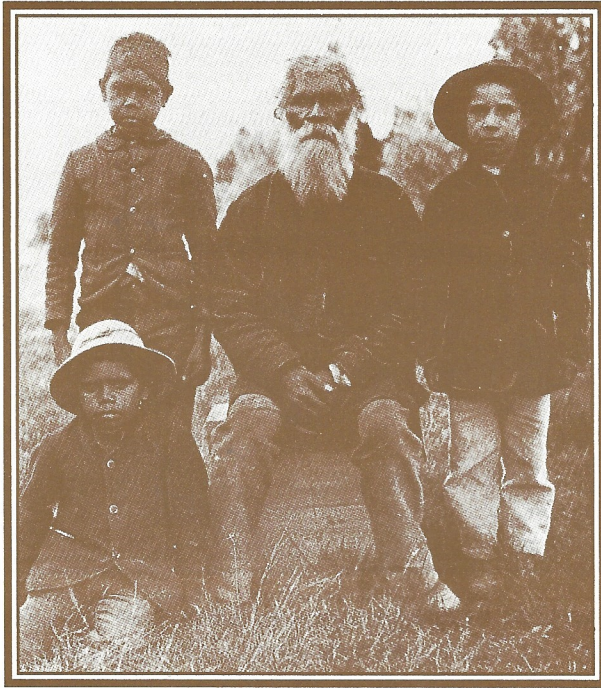
One way to do this heritage tour is to start in Van Ness Avenue, Maribyrnong, at Pipemakers Park. Only a few years after Europeans settled in this valley, thousands of sheep were killed on this site, at the meat works set up by Joseph Raleigh. In 1868, a meat cannery began here. It became Australia's biggest cannery, employing 200-300 men at peak times. The river was handy for transport to and from the port at Melbourne and as a drain for waste products. The bluestone quarries near here provided the stone for the meat works buildings which were used later for making Hume concrete pipes. Today this is a Board of Works park and the home of Melbourne's Living Museum of the West.

MEL 28 B10 Nearest tram connections No. 57 (City and Maribyrnong). No. 82 (Footscray and Moonee Ponds).

Panel No. 1

ABORIGINAL HERITAGE

- WILLIAM BARAK -



William Barak (c.1818-1903) was a member of the Yarra Yarra (Wurundjeri) tribe which inhabited the Melbourne area. For many thousands of years the Marin-Bulluk (a clan of the Wurundjeri tribe) occupied this side of the Maribyrnong River. They built a fish trap on the spot nearby where there is now a ford. The valley was a plentiful source of fish, 'murnong' (wild potatoes), eggs, nuts, roots, berries and native animals. As a child, Barak camped along rivers, fishing, eeling and hunting. Later he became Chief of the Wurundjeri; highly respected by his own people and colonials. He is also remembered for his artistry and excellent story-telling. Koori people today are proud of him - proud of their heritage.

MEL 27 B9. Between Burke and Duke Streets. Just above a good walking track along the river between the ford and Cranwell Park

Panel No. 2

BRAYBROOK HOTEL

1927

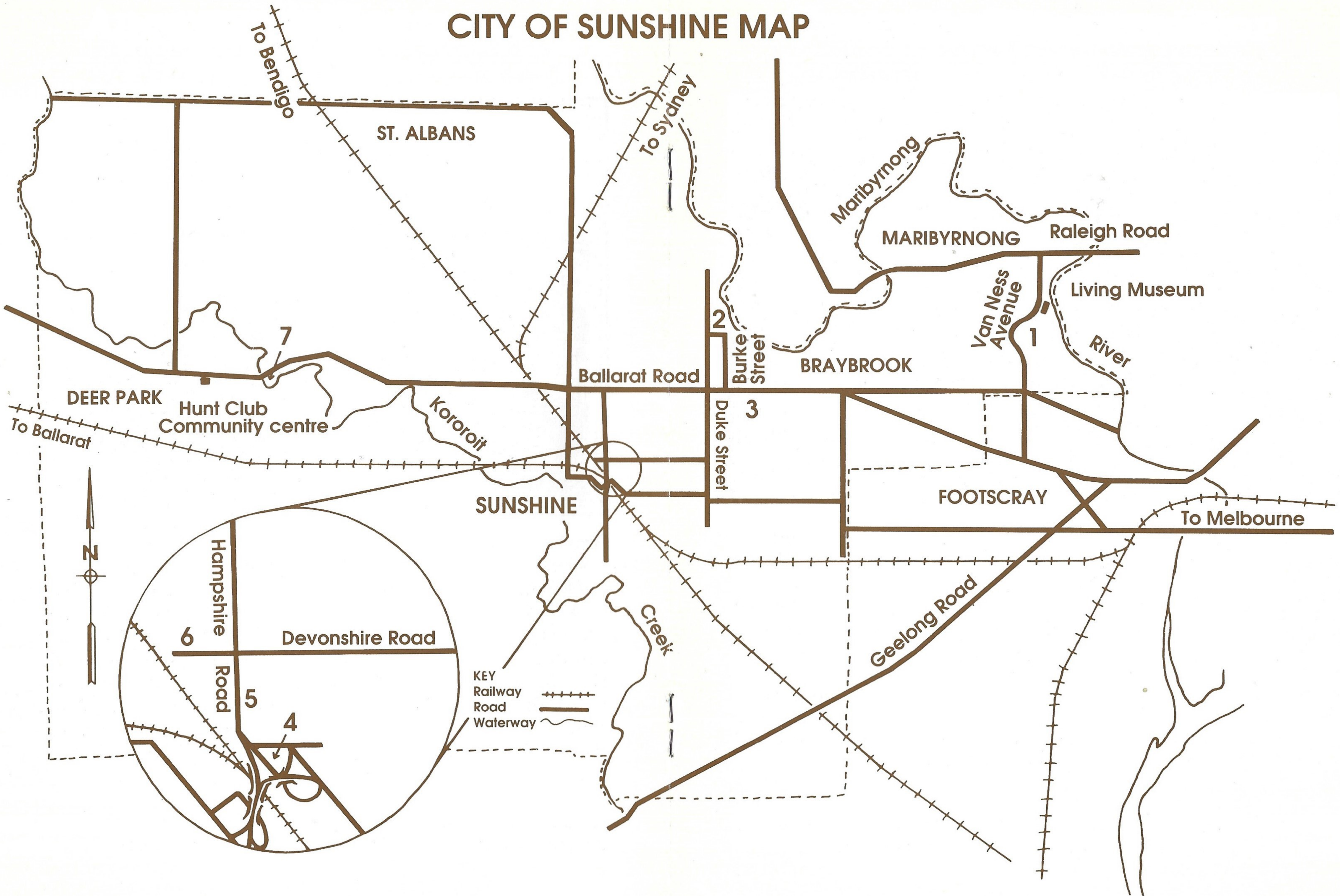


Braybrook was once a small village, on the way to the gold-fields. An earlier hotel here in the 1850s served thirsty diggers and was also court house and meeting place. The present bluestone hotel dates back to the 1870s and was the home of Thomas Burge Derham, butcher, dealer and publican, his wife Matilda, and their eleven children. The younger children attended Braybrook State School No.1102 which opened in 1873. Tom Derham owned most of the land in the district, exported horses to India and sent his customers home before they drank too much. Like many women at that time, Mrs. Derham often ran the hotel. She was a very dignified lady. In 1927, Mrs E.Gunn was the publican.

MEL 27 B11. On Ballarat Road (near the corner of Duke Street).
Braybrook Hotel still provides refreshments to travellers.

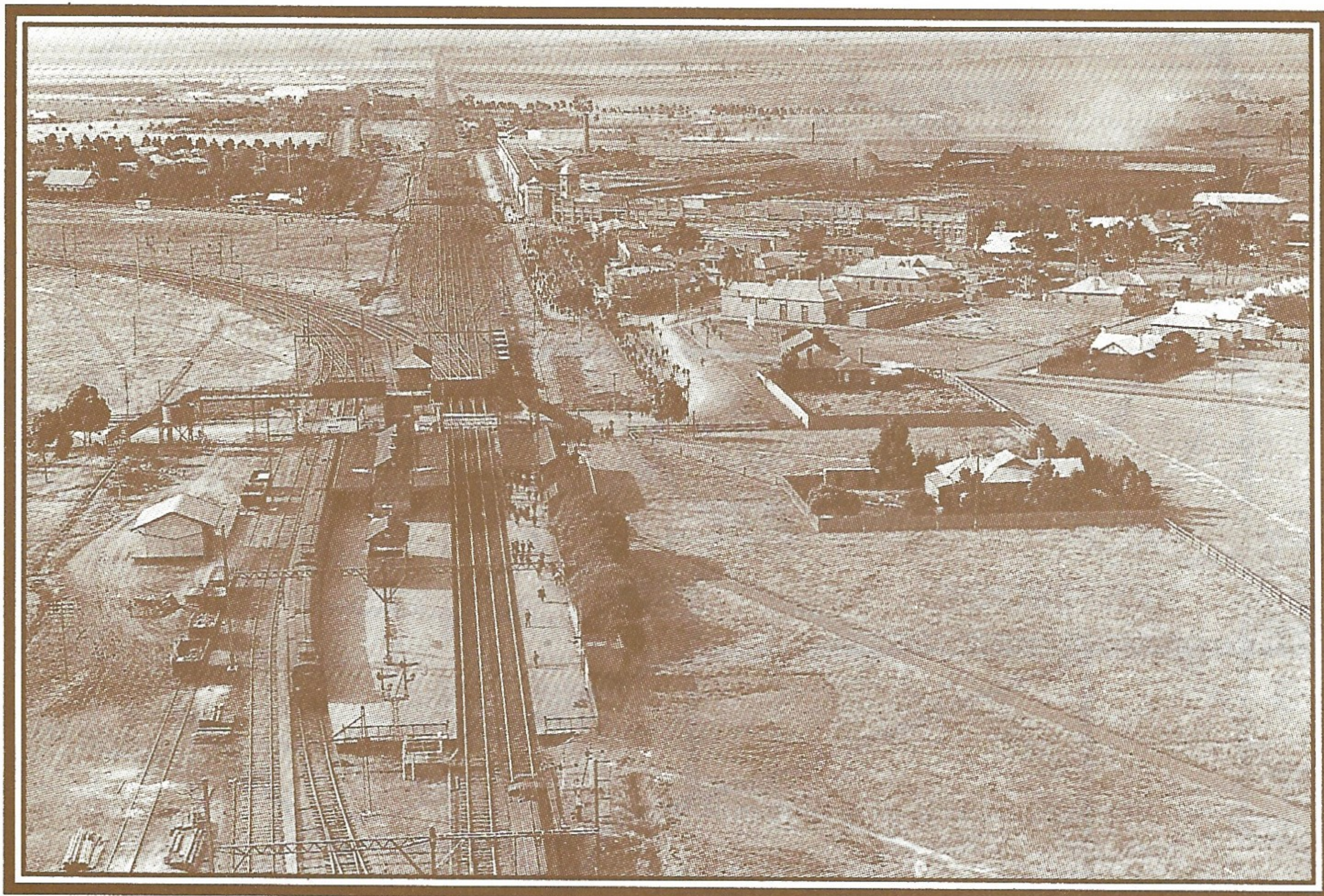
Panel No. 3

CITY OF SUNSHINE MAP



SUNSHINE STATION

1924



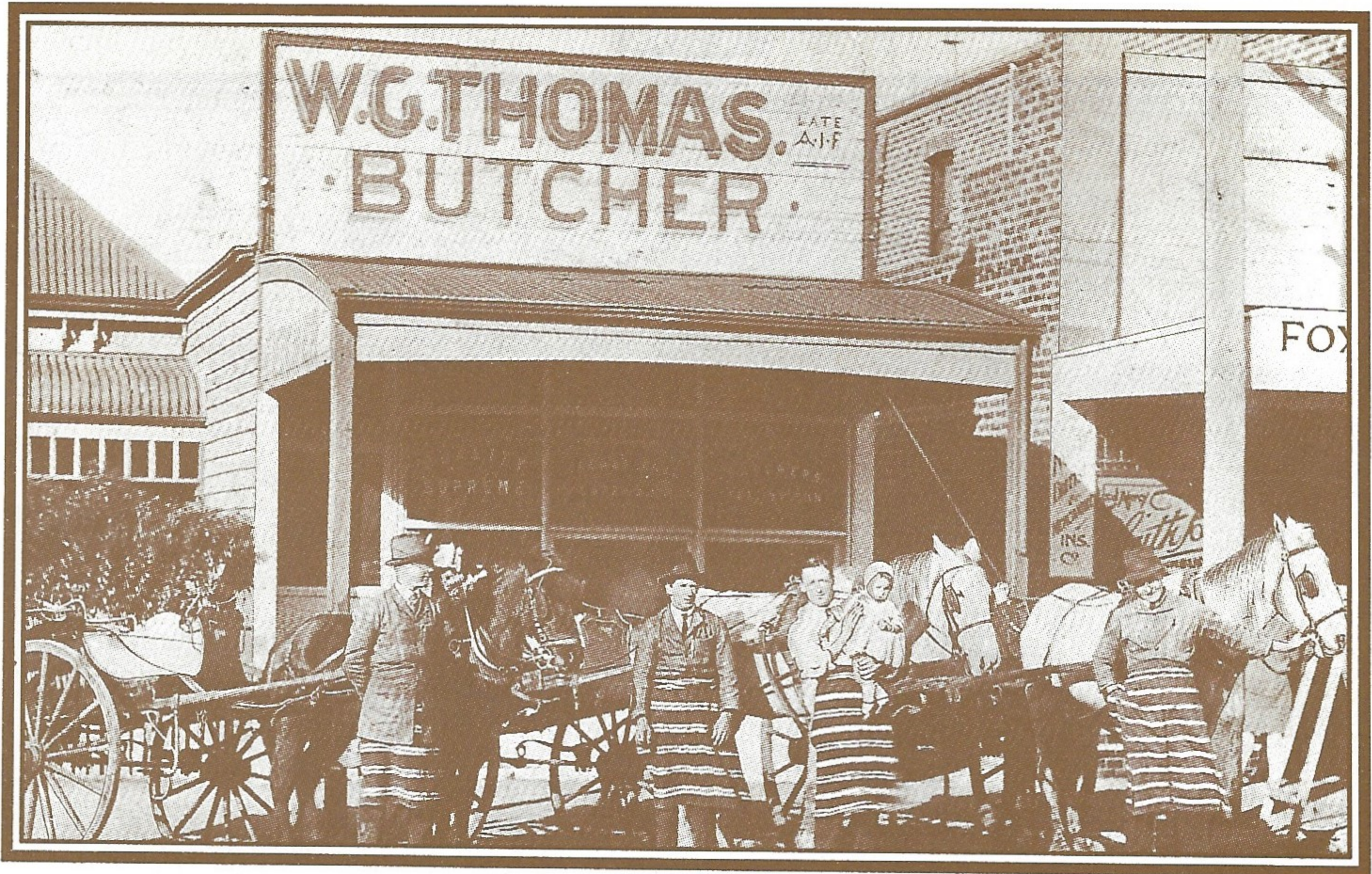
The first railway to be built through the area was to Bendigo in 1858-9. Another line, built in 1882-6, went to Bacchus Marsh and later Ballarat. The joining of the two lines made 'Braybrook Junction'. A station opened in 1886 and a township developed, but within ten years factories closed, families left and buildings were moved. After the Sunshine Harvester Works arrived, the settlement was re-named 'Sunshine'. In 1908, forty-four people were killed in the 'Sunshine Railway Disaster', one of Australia's worst train accidents. By 1924, Sunshine was quite a town, with its own electricity supply. Each day huge numbers of workers streamed out from the station heading for the Harvester Works.

MEL 40 H. Train (St. Albans line) and bus links. Take Hampshire Road exit to visit Panel No. 6. Park in car park near station.

Panel No. 4

THOMAS'S BUTCHER SHOP

c. 1927



William George Thomas ran a butcher shop here in Hampshire Road in the 1920s – 30s, at first in partnership with his brother Albert. A shop sign showed that William had fought with the A.I.F. in the 1914-1918 war. William married Lizzie O'Brien from Deer Park and they had seven children. The family lived in the house next to the shop. The photograph shows William Thomas holding his baby daughter Emma, Albert, nephew William and another butcher. In those days, fridges were rare (though some people had ice chests) and butchers often delivered meat to their customers. Today, Chinese and Italian restaurants have replaced many of the old town's shops.

MEL 26 H 12 Half-way between Sunshine Station and the site of the Sunshine Harvester Works.

SUNSHINE HARVESTER WORKS

c.1921



Sunshine got its name from H.V.McKay's famous 'Sunshine Harvester', first constructed in 1884 and developed in his Ballarat factory, 1894-1904. He moved his factory here in 1906, taking over the Braybrook Implement Works. 200 of McKay's workers moved with him and many settled locally. The Sunshine Harvester Works became one of Australia's largest factories and the centre of a growing town, which became a city in 1951. Four years later, Massey-Harris-Ferguson took over the works and a new tower replaced the old clock tower.

MEL 26 H 12. Five minute walk from Sunshine Station. A climb up the steps of the footbridge at the end of Devonshire Road will lead to an excellent view of the McKay Gardens.

Panel No. 6

BRAYBROOK SHIRE HALL

c.1886



Nothing remains of the Shire Hall but this spot was once the centre of Braybrook Shire, (proclaimed in 1871,) which covered a large area from Maidstone, Braybrook and Maribyrnong to Rockbank and Toolern Creek at Melton. After many arguments about location, work began on a shire hall here in 1885, near Australia's leading explosives factory and the village of Kororoit Creek (later Deer Park). The hall was of bluestone - one of Braybrook Shire's main products. The Shire Council met here until 1918, when it moved to Sunshine. Braybrook Shire eventually became the City of Sunshine.

MEL: 25 H8. On the Western Highway, opposite the Deer Park Hotel. Good views of the creek.

FURTHER READING

Carstairs, J. & Lane, M., *Pubs, Punts and Pastures: The Story of Pioneer Irish Women on the Saltwater River*, St. Albans, 1988.

Ford, O. & Lewis, P. *Maribyrnong: Action in Tranquillity*, Sunshine, 1989.

McGoldrick, P. *When the Whistle Blew: A Social History of the Town of Sunshine, 1920-1950*, Morwell, 1989.

Popp, E. *Glimpses of Early Sunshine: Dawn of a District from Aboriginal Times to 1901*, Sunshine 1979.

Presland, G. *First Residents of Melbourne's Western Region*, Melbourne, 1988.

PLACES TO VISIT

Hunt Club Community Centre, 775 Ballarat Road, Deer Park: classes, exhibitions, venue for Historical Society meetings and work sessions. Craft Market every 4th Sunday. Ph. 363-3877

Sunshine City Library, Monday - Friday, 10 a.m. - 8.30 p.m. Saturday 10 a.m. - 5.30 p.m. Ph. 311-0712

Living Museum of the West, Pipemakers Park, Van Ness Avenue, Maribyrnong, 3032. Open Saturday - Thursday, 10 a.m. - 4 p.m. Ph. 318-3544. Also riverside walking and bike path.

Cranwell Park, Cranwell Street, Braybrook.

Kororoit Creek walking track

=====

Co-ordination, planning, research, writing and liaison for the heritage panels and this brochure was undertaken by members of the Sunshine & District Historical Society, which also contributed funds to the project.

The Historical Society is currently building up and cataloguing its photographic collection. It welcomes offers of help, donations of photographs and new members. Enquiries: David Templeton, 311-3487 or Margaret Watson, 311-2275. Or write to the Society c/o Sunshine City Library, McCracken Street, Sunshine. 3020.

=====

Heritage Panel production by Photostory Pty.Ltd.,
33-35 Raglan Street, Port Melbourne. 3207. Ph. 645-1730